

<http://www.barkaonline.hu/kepzmveszet/8373-ale-ildiko-egyensuly-cim--kallitasa-a-szegedi--szi-kulturalis-fesztivalon>

Katalin Szuhaj

***Balance* – The Exhibition of Ale Ildikó at the Autumn Cultural Festival, Szeged**

The latest exhibition of Ildikó Ale titled *Balance* took place at the József Attila Study and Information Centre, Szeged between the 19th and 28th of October, which was organized during the Autumn Cultural Festival, University of Szeged. The artist together with the pianist, Attila Blahó conducted a guided tour on the day of the opening.



Ildikó Ale and Attila Blahó conducting a guided tour at the exhibition titled *Balance*

19th October 2022

(Photo by János Rómer)

At exhibitions, the artist always seeks interactions with the audience, she even goes beyond the secret boundary – terra incognita – between the artwork and the viewer, then she stands in front of the audience to tell the stories of the pictures and talk about her art while the participants are drawn closer to the creative process.

Every picture of Ildikó Ale is a choice, a question or an exciting game: she does not thrust the viewer into a sea of heavy reflections; on the contrary, she easily draws them into her world of fantasy liberating the mind from the limits of everyday life, while providing a novel and deeper interpretation of life. The artist lets her journeys (worldly and spiritual) and discoveries guide her to become a responsive painter of paths, life and self-reflection. Distant lands, archaic forms, industrial landscapes, and interiors are all characteristics of her palette. She integrates her topics into series in a rather vivid way.

In the series titled *Light purple – Illustrations for the electric compositions of the pianist, Attila Blahó* the painter's curious mind not only focuses on the formal and chromatic aspects of painting but the physical properties of colour.

The pianist and composer Attila Blahó highlighted at the joint exhibition that the audible and visualized *Abstracts* were made ten years ago. He intended to create an independent musical genre free of any stereotypes as a rebellion against the popular music of today. The peculiarity of the electronic musical composition by Blahó is that there is no basic tune or rhythm, however, harmonies and sudden dissonances interweave the music.

In Ildikó Ale's interpretation, this music is part of the universe, beyond the earth, a magical "purple landscape" of the Moon, which recalls supernatural, and at the same time natural sounds. The colouring techniques as well as the unexpected changes in the surface can make this mysterious musical world "visible" and sensible. The forms transform into an amalgam, they – musically speaking – even become fine and tender: the immortal and incomprehensible symphonies of life.



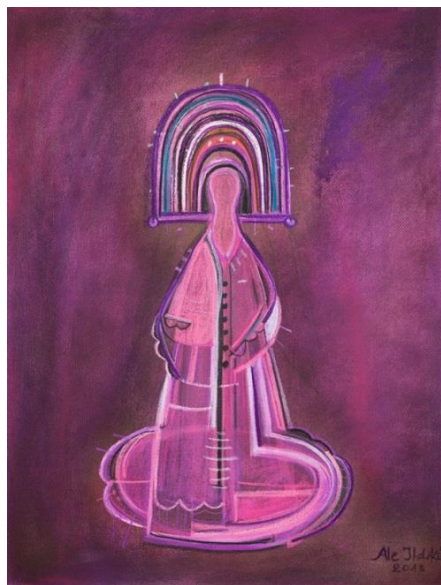
Ildikó Ale: *Abstract No. 1*

A characteristic piece of the series is *Abstract No. 1*. The mysterious harmony of the tones and frequency takes us to the metaphysical land of tranquillity: as if we were sitting in an armchair when we are suddenly sized by a cosmic cloud and with soft waves it carries us away to a remote imaginary land. The mystical still life exhibited here is transformed into a self-portrait by the collection of the artist's personal objects. The vertical stripes continue in horizontal lines thereby emphasizing the flow of music. The objects of the interior are

arranged in unexpected order and harmony. The dimension is well perceptible in the dynamic play of colours and lines. Ildikó Ale composed a peculiar, balancing still life where the relation of the objects is characterized by instability making this interior even more exciting and “spiritual”. No shadows are leading the eye of the viewer to the furniture seen in the background as a “phantom tower”, which is slightly leaning to the left out of the horizontal line of the picture, while the chair next to it softly melts into the purple background. The artist applies the pigments and the pastel in such a way that she creates a throbbing and vibrating surface from the inside where the form returns to its very essence.

The five artworks created based on the opera, *Bluebeard's Castle* composed by Béla Bartók can be seen on the other wall of the room, which are exhibited together for the first time in the frame of a related topic. Two of them were painted around 2006 and the other three pieces of the series were made in 2018. It is interesting to note that the picture titled *Bluebeard's Castle* was added to the collection of the Szeged Regional Court of Appeal and can be seen by the public for the first time.

The most interesting piece of the series is the painting entitled *Judith*. Judith, the Woman is shining. Considering its decorative character, the picture represents the woman principle and the gentleness of the soul. Confined in a frame, the space of the figure is limited as our world, our boundaries in space and time determine our life. However, this unreachable, mystical female figure could visualize eternal beauty without any borders or constraints. The figure has concentrated energy as if transmitting female beauty and love.



Ildikó Ale: *Judith / Bluebeard's Castle*

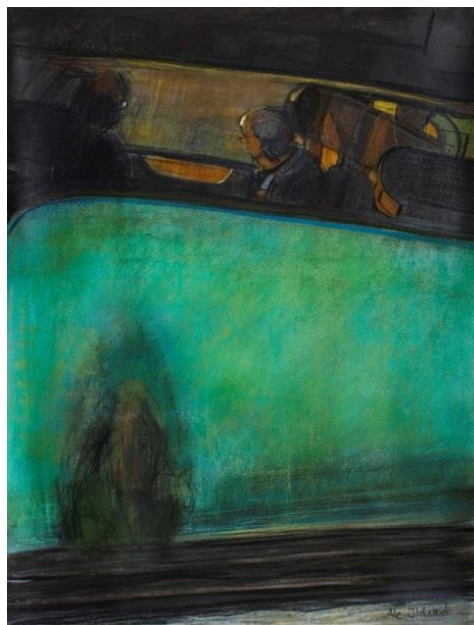
In the third part of the exhibition, the latest works of Ildikó Ale are *About Pears* and displayed in addition to visionary architecture. According to the artist, she was inspired – during the creation of the series – by, among other things, the fact that the structure of the pear looks unstable as if it is going to tumble, however, due to its centre of gravity it equilibrates the curves and despite its irregular and wavy form, its hidden “self” convey stability and inner

balance. The pear formations moving in a surrealist dream space project a confined imaginary world halfway between still lifes and visions.



Ildikó Ale in front of the series, *About Pears* during the artist's own guided tour
(Photo by János Rómer)

Similarly, a piece of the series titled *Changing Constancy* displayed at the exhibition was made based on photos; however, the work is not an imitation but the product of the artist's imagination.



Ildikó Ale: *Changing Constancy II*, 2016

The optical illusions created by reflections make it possible to manifest – in an intuitive way – the logic of spatial relationships strung along an imaginary dividing line by ruling out the traditional perspective used for the depiction of the outside and inside, the above and below. Therefore the real journey and the associated inner travelling are not separated, but perceptible at the same time, which is conveyed by the gentle harmony of colours as well as dissolving the transition and outlines in the infinite space.

The guided tour by Ildikó Ale at her exhibition, *Balance* became a kind of synthesis of arts. The pictures and musical abstracts reached us by condensing several layers of meaning and spanning through the boundaries of genres so that a miracle could happen inside us, in the heart of the naïve viewer.



Ildikó Ale, the exhibition titled *Balance* – “Audience Discussion”

(Photo by Katalin Szuhaj)

The artist’s homepage: www.aleatelier.hu